

MONTHLY MEMBERSHIP PROGRESS REPORT

District 27 C1

Results as of: 5/31/2024

GMT:

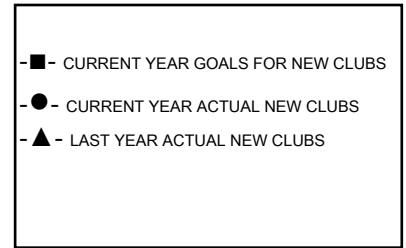
LOCATION WISCONSIN

GMT CA

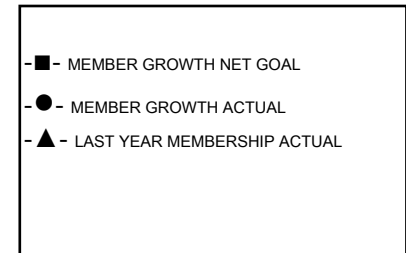
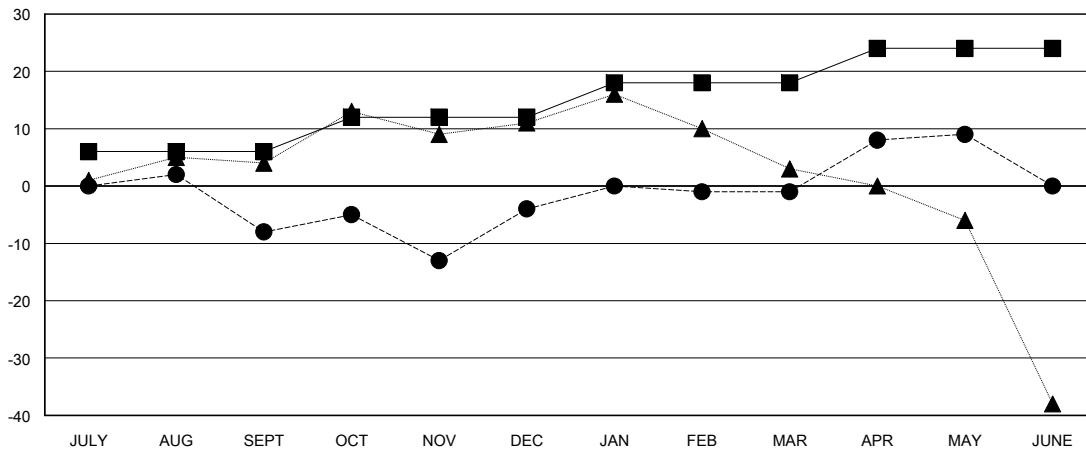
Clubs			
RESULTS FOR 2023-2024			
QUARTER	NEW CLUB GOAL	NEW CLUBS	DROPPED CLUBS
JULY/AUG/SEPT	0	0	0
OCT/NOV/DEC	1	0	0
JAN/FEB/MAR	0	0	0
APR/MAY/JUNE	0	0	0

Members			
RESULTS FOR 2023-2024			
QUARTER	MEMBER GROWTH NET GOAL	MEMBER GROWTH ACTUAL	DROPPED MEMBERS ACTUAL (including transfers)
JULY/AUG/SEPT	6	28	34
OCT/NOV/DEC	6	38	34
JAN/FEB/MAR	6	16	12
APR/MAY/JUNE	6	22	12

GOALS AND ACTUAL NEW CLUBS CUMULATIVE



GOALS AND ACTUAL MEMBERS CUMULATIVE



DROPPED CLUBS: 0	29 CLUBS OF 51 ADDED 1 OR MORE NEW MEMBERS	GENDER DISTRIBUTION MALE 965 (69.93%) FEMALE 415 (30.07%)
DROPPED MEMBERS DECEASED 20 CLUB CANCELLED 0 OTHER 72 TOTAL 92	CLICK HERE FOR CUMULATIVE MEMBERSHIP DATA	TOTAL FAMILY UNIT MEMBERS 391 FAMILY MEMBERS PAYING HALF DUES 200